

XIAMEN HOPERGY PHOTOVOLTAIC TECHNOLOGY CO., LTD.

ADD: 1001 Unit, No. 2366, Fangzhong Rd, Huli, Xiamen, 361015 P. R. China

Tel: +86-592-5689685 Fax: +86-592-5638096

Web: www.hopergy.com Email: info@hopergy.com





HOPERGY PRODUCT RANGE

| | |
|---|----|
| COMPANY PROFILE | 01 |
| FOREMOST COMPONENTS | 03 |
| THE UNIVERSAL TILE ROOF MOUNTING SYSTEM | 06 |
| TILE ROOF INTERFACE BRACKET | 07 |
| THE UNIVERSAL TIN ROOF MOUNTING SYSTEM | 09 |
| TIN ROOF SOLUTION | 10 |
| TRIPOD SOLUTION | 14 |
| GROUND MOUNTING SOLUTION | 15 |
| POLE MOUNTING SOLUTION | 21 |
| EARTHING SYSTEM | 22 |
| COMPATIBLE ACCESSORIES | 23 |





COMPANY PROFILE

Powered by innovative capability since its foundation, Hopergy focus on researching, manufacturing, distribution and engineering of superior solar photovoltaic products. Our solar PV solutions address the immediate requirements and needs of residential, corporate, government and utility scale applications worldwide.

Hopergy has been striving to be one of the leading synthesized solar PV solutions suppliers in the world, with well-known brand, quality products, competitive price and excellent service, we aim at establishing a long-range, mutually beneficial and strategic collaboration with worldwide partners, as well as creating a prosperous future together via meeting and exceeding our clients' expectation.

Hopergy's mission is to continue to give client priority based on creating customer value, offering renewable energy products and a global service with high quality as well as competitive price aiming to make the green energy affordable and accessible to all people around the world. We wish to become your most professional, reliable and preferred supplier of solar photovoltaic solutions in the world.

RAIL

Hopergy provide silver and black anodized rails with innovative design.

Material: Anodized Extruded Aluminum 6005-T5
Color: Natural Silver or Black Anodized

Hopergy Rail A Types:

| | |
|-------------|-----------------------------------|
| HOP-OA-2560 | HOP Standard 2560mm Rail A |
| HOP-OA-3405 | HOP Standard 3405mm Rail A |
| HOP-OA-4200 | HOP Standard 4200mm Rail A |
| HOP-OA-4400 | HOP Standard 4400mm Rail A |
| HOP-OA-X | HOP A Rail with Customized Length |



HOP-OA



HOP-OAB



HOP-OB



HOP-OB

Hopergy Rail B Types:

| | |
|-------------|-----------------------------------|
| HOP-OB-2560 | HOP Standard 2560mm Rail B |
| HOP-OB-3405 | HOP Standard 3405mm Rail B |
| HOP-OB-4200 | HOP Standard 4200mm Rail B |
| HOP-OB-4400 | HOP Standard 4400mm Rail B |
| HOP-OB-X | HOP B Rail with Customized Length |

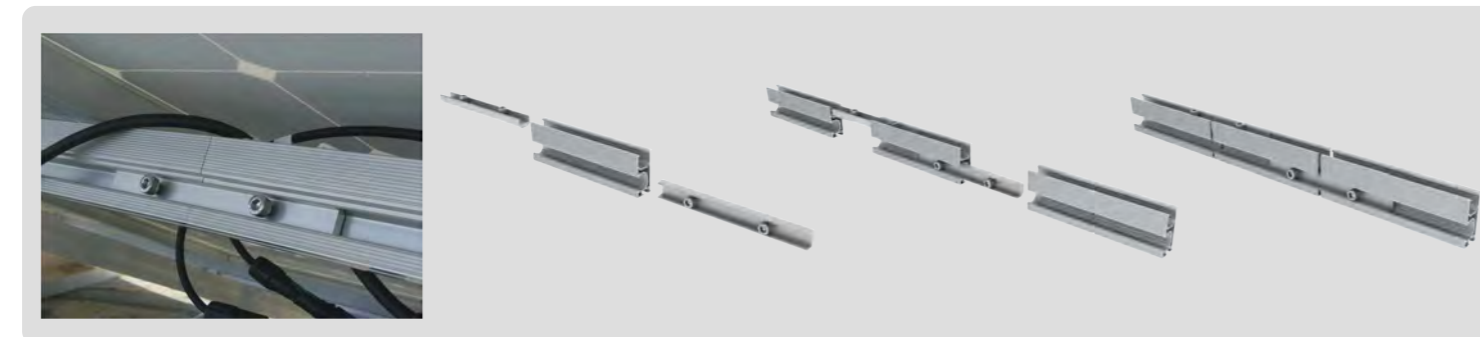
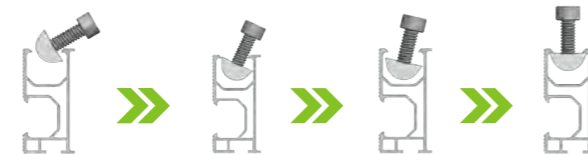


HOP-O-SPK



HOP-O-FN

| | |
|-----------|---------------------------------|
| HOP-O-SPK | HOP Rail Standard Connector |
| HOP-O-FN | HOP Unique Bow Shape Fixing Nut |



FRAMED MODULE CLAMP

Color: Natural Silver or Black Anodized

Compatibility Range: 35mm~50mm Framed Solar Panel

Material: Anodized Aluminum 6005-T5, A2-70 Hexagon Socket Head Cap Bolt

| Item No. | Description |
|------------|----------------------|
| HOP-ICK-35 | HOP Inner Clamp 35mm |
| HOP-ICK-38 | HOP Inner Clamp 38mm |
| HOP-ICK-40 | HOP Inner Clamp 40mm |
| HOP-ICK-42 | HOP Inner Clamp 42mm |
| HOP-ICK-45 | HOP Inner Clamp 45mm |
| HOP-ICK-50 | HOP Inner Clamp 50mm |



HOP-ICK



HOP-ICB

| Item No. | Description |
|------------|--------------------|
| HOP-ECK-35 | HOP End Clamp 35mm |
| HOP-ECK-38 | HOP End Clamp 38mm |
| HOP-ECK-40 | HOP End Clamp 40mm |
| HOP-ECK-42 | HOP End Clamp 42mm |
| HOP-ECK-45 | HOP End Clamp 45mm |
| HOP-ECK-50 | HOP End Clamp 50mm |



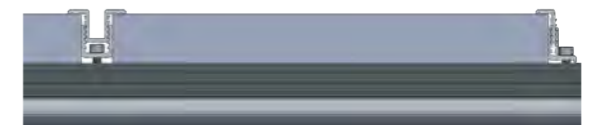
HOP-ECK



HOP-ECB

Adjustable Clamp:

| Item No. | Description |
|----------|------------------------------------|
| HOP-AIC | HOP Adjustable Inner Clamp 35-50mm |
| HOP-AEC | HOP Adjustable End Clamp 35-50mm |



HOP-AIC



HOP-AEC



FRAMELESS MODULE CLAMP

Color: Natural or Customized
Compatibility Range: 5.5~10.5mm Thin Film Module
Material: Anodized Aluminum6005-T5, A2-70 Bolt, EPDM Rubber and Stainless Steel Fastener

| Item No. | Description |
|----------|---------------------------|
| HOP-TFIC | HOP Thin Film Inner Clamp |
| HOP-TFEC | HOP Thin Film End Clamp |



HOP-TFIC



HOP-TFEC



THE UNIVERSAL TILE ROOF MOUNTING SYSTEM

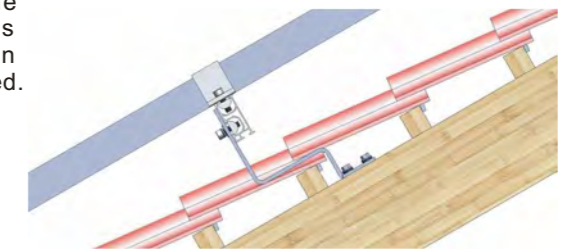
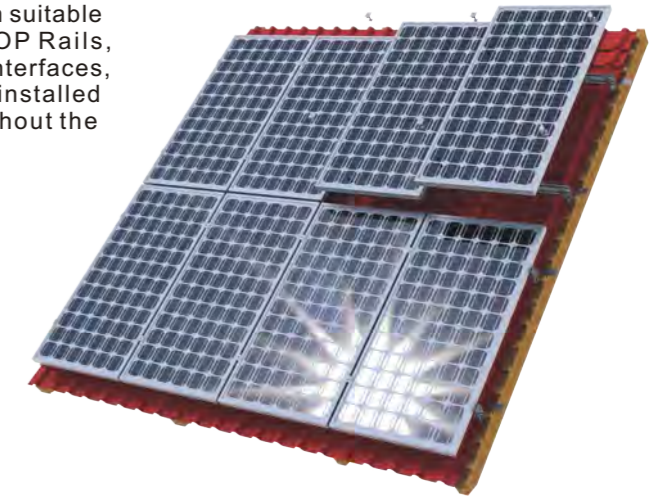
Hopergy Universal Tile Roof Mounting System is a roof-mounting solution suitable for most types of pitched tile roofs. Using our optimized devised HOP Rails, pioneered embedded rail connector, the bow shape fixing nut and roof interfaces, Hopergy Universal Tile Roof Mounting System is fast and simple to be installed cost-effectively and high efficiently, has being widely applied throughout the world.

Technical Features:

Standard: AS/NZS1170, Euro Code 8, DIN 1055, IBC 2006
Material: High Class Anodized Aluminum6005-T5 and SUS304
Snow Load: 1.4 KN/m2
Max Wind Speed: 55 m/s
Warranty: 15 Years and 25 Years Service Life

Key Benefits:

- ◆ **Easy Installation**
 Hopergy optimized devised Rails, pioneered embedded rail connector and the bow fixing nut consist the best solution which could do a favor for installers easier to put the fixing nut into the opening of HOP rails without consideration of tilt-in orientation of fixing nut, a safe and efficient work is easy to be implemented.
- ◆ **Perfect Compatibility**
 Designed as a universal mounting frame, our mounting solution is compatible with most of the major framed and frameless solar panels on the market.
- ◆ **High Quality**
 Hopergy use high class aluminum and stainless steel material as per international standard. Strict quality control covering the entire process from material selection and manufacturing to pre-assemble ensures optimum life for your installation work.
- ◆ **15 Years Warranty**
 Hopergy provide a 15 years product warranty for using at ease.



Section

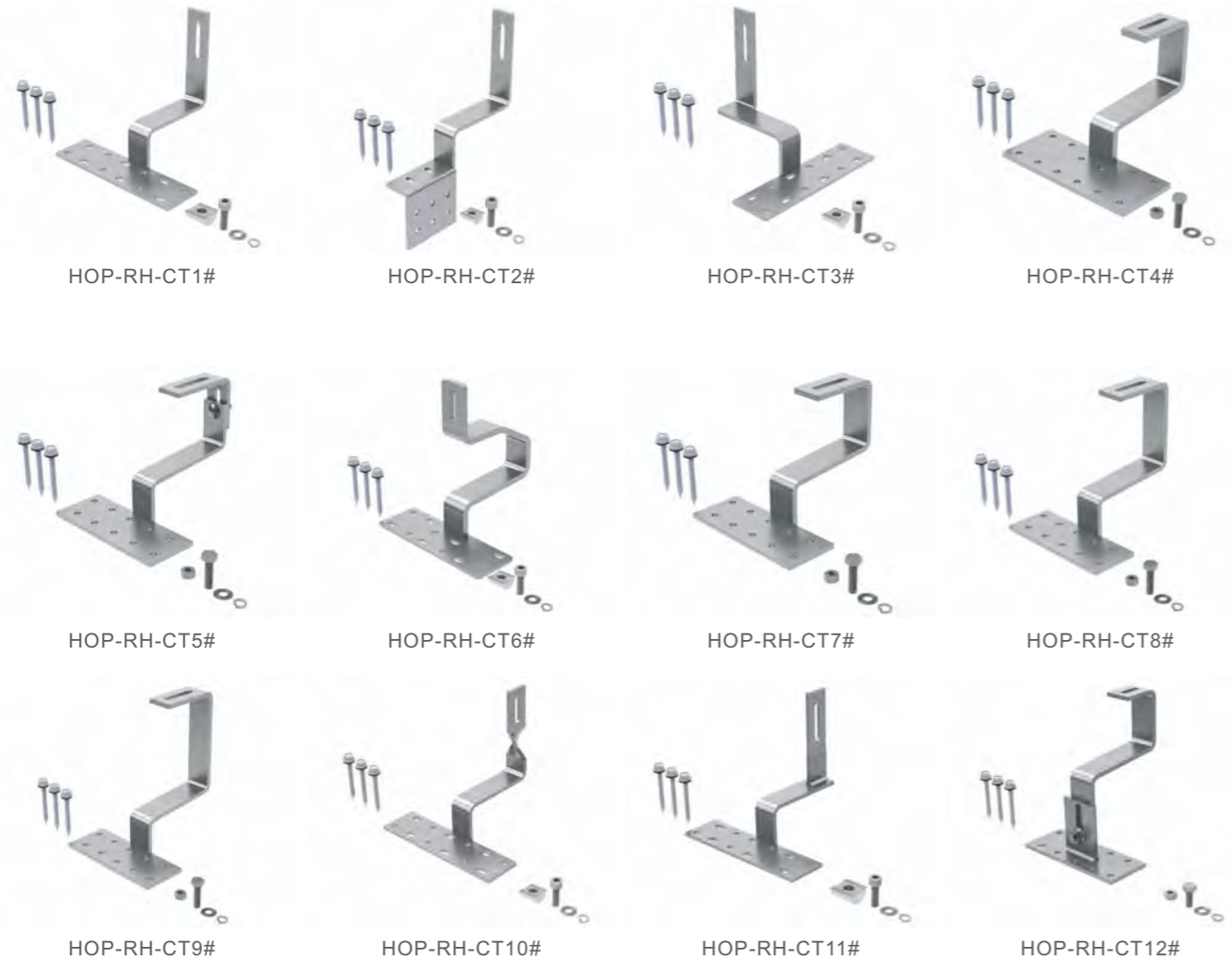


TILED ROOF INTERFACE BRACKET

Hopergy provide the easiest, fastest, most universally code-compliant tile roof interface brackets available for composition roofs.

Material: Stainless Steel SUS304 and A2-70 Hexagon Socket Head Cap Screw

Clay Tile Roof Interface Bracket



TILED ROOF INTERFACE BRACKET

Flat Tile Roof Interface Bracket

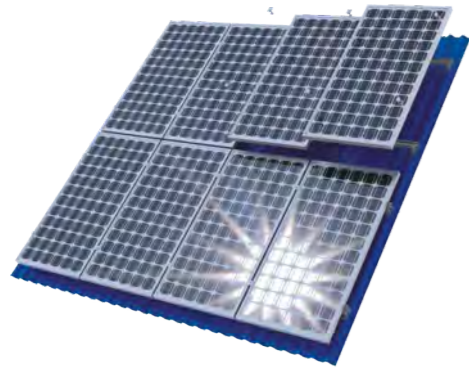


Slate Tile Roof Interface Bracket

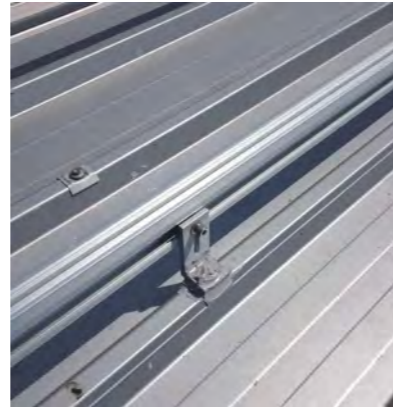


THE UNIVERSAL TIN ROOF MOUNTING SYSTEM

Hopergy Universal Tin Roof Mounting System is a roof-mounting solution suitable for most types of pitched and flat metal sheet roofs. Using our optimized devised HOP Rails, pioneered embedded rail connector, the bow shape fixing nut and tin roof interfaces, Hopergy Universal Tin Roof Mounting System is fast and simple to be installed cost-effectively and high efficiently, has being widely applied throughout the world.



Section



Technical Features:

- Standard:** AS/NZS1170, Euro Code 8, DIN 1055, IBC 2006
- Material:** High Class Anodized Aluminum 6005-T5 and SUS304
- Snow Load:** 1.4 KN/m²
- Max Wind Speed:** 55 m/s
- Warranty:** 15 Years and 25 Years Service Life

Key Benefits:

- ◆ **Easy Installation**
Hopergy optimized devised Rails, pioneered embedded rail connector and the bow fixing nut consist the best solution which could do a favor for installers easier to put the fixing nut into the opening of HOP rails without consideration of tilt-in orientation of fixing nut, a safe and efficient work is easy to be implemented.
- ◆ **Perfect Compatibility**
Designed as a universal mounting frame, our mounting solution is compatible with most of the major framed and frameless solar panels on the market.
- ◆ **High Quality**
Hopergy use high class aluminum and stainless steel material as per international standard. Strict quality control covering the entire process from material selection and manufacturing to pre-assemble ensures optimum life for your installation work.
- ◆ **15 Years Warranty**
Hopergy provide a 15 years product warranty for using at ease.

TIN ROOF SOLUTION I

Hopergy provide the easiest, fastest, most universally code-compliant tin roof interface brackets available for composition roofs.

Material: Anodized Aluminum 6005-T5 and SUS304 and A2-70 Hexagon Socket Head Cap Bolt

Tin Roof Interface Bracket



HOP-TH-L



HOP-TH-1#



HOP-TH-2#



HOP-TH-3#



HOP-TH-4#



HOP-TH-5#



HOP-TH-6#



HOP-TH-7#

Hopergy provide universally code-compliant pre-assembled hanger bolt available for composition roofs.

Material: Stainless Steel SUS 304

HOP-TH-M10 Double Threaded Rafter Screw M10 x 200mm



HOP-TH-M10

TIN ROOF SOLUTION II

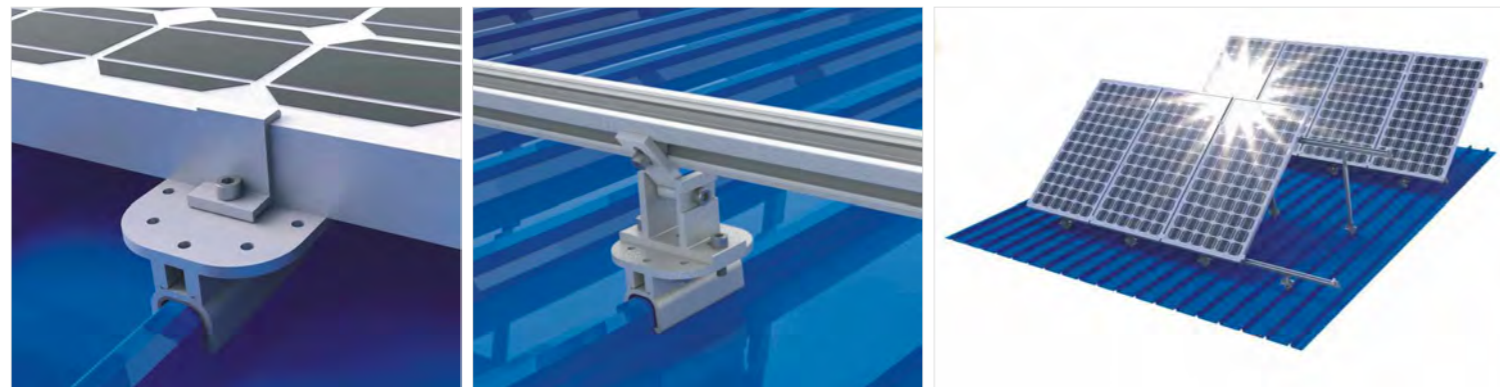
HOP-LOK

Hopergy Kliplok interface provides an easy and cost-effective way to mount solar panels onto Kliplok type roofs without any penetration. Solar panels could be fixed with inner clamp and end clamp directly to interface bracket, which are secured firmly onto the rib of roof, no rails being used and no holes being drilled through the roof. The interface for Kliplok type roofs is designed with EPDM rubber with the benefit of high corrosion resistance and with the maximum lifespan. It is compatible with HOP tilt leg allowing tilt angles from 10 to 60 degree to maximize the system performance based on most cost effective solution.



Technical Features:

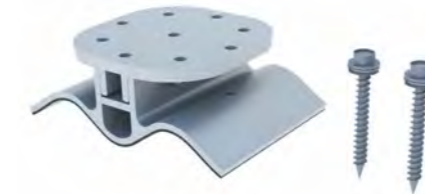
- Roof Type:** Kliplok 406, Kliplok 700, Speed Deck Ultra
- Mounting Method:** Clamping
- Compatibility:** Tilt Leg, L-feet, Inner Clamp, End Clamp
- Material:** Stainless Steel SUS304 and A2-70 Hexagon Socket Head Cap Bolt
- Warranty:** 15 Years and 25 days Service Life



TIN ROOF SOLUTION II

HOP-COB

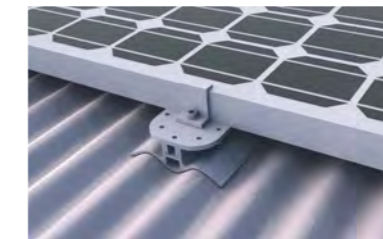
Hopergy LYSAGHT CUSTOM ORB® Interface provides an easy and cost-effective way to mount solar panels onto CUSTOM ORB® roof sheeting.



HOP-COB



LYSAGHT CUSTOM ORB® Interface



HOP-TRK

Hopergy LYSAGHT TRIMDEK® Interface provides an easy and cost-effective way to mount solar panels onto LYSAGHT TRIMDEK® roof sheeting.



HOP-TRK

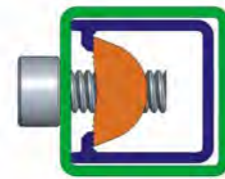


LYSAGHT TRIMDEK® Interface



TIN ROOF SOLUTION III

Hopergy Adjustable Mounting Frame is applicable to mount solar panels on flat roof or concrete roof, could be adjusted to three angle ranges 10~15 degree, 15~30 degree and 30~60 degree. It is a tilt solution widely used for residential rooftop solar PV system and commercial rooftop system.



Inside View



HOP-AD-FL



HOP-AD-RL

Technical Features:

Standard: AS/NZS1170, Euro Code8, DIN1055, IBC2006
Material: High Class Anodized Aluminum6005-T5 and SUS304
Snow Load: 1.4 KN/m²
Max Wind Speed: 55 m/s
Warranty: 15 Years and 25 Years Service Life

Partly Pre-assembled Support Kit

| | |
|-----------|----------------------------------|
| HOP-AD-FL | HOP Adjustable Front Support Leg |
|-----------|----------------------------------|

| | |
|-------------|--|
| HOP-AD-RL-1 | HOP Adjustable Rear Support Leg 10~15 Degree |
|-------------|--|

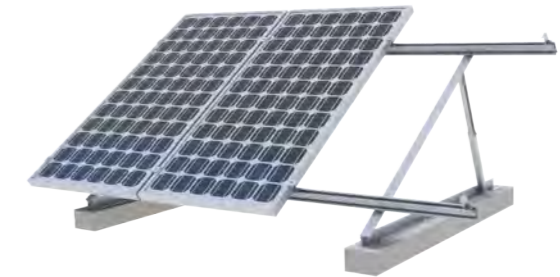
| | |
|-------------|--|
| HOP-AD-RL-2 | HOP Adjustable Rear Support Leg 15~30 Degree |
|-------------|--|

| | |
|-------------|--|
| HOP-AD-RL-3 | HOP Adjustable Rear Support Leg 30~60 Degree |
|-------------|--|



TRIPOD SOLUTION

Hopergy Tripod Adjustable Mounting System is applicable to mount solar panels on flat roof or on the ground, could be adjusted to three angle ranges 10~15 degree, 15~30 degree and 30~60 degree, widely being used for residential rooftop solar PV system and commercial rooftop system throughout the world.



Technical Features:

Standard: AS/NZS1170, Euro Code8, DIN1055, IBC2006
Material: Anodized Aluminum 6005-T5 and SUS304
Snow Load: 1.4 KN/m²
Max Wind Speed: 55 m/s
Warranty: 15 Years and 25 Years Service Life

Partly Pre-assembled Support Kit

| | |
|-----------|-------------------------------------|
| HOP-TPS-1 | HOP Tripod Support Kit 10~15 Degree |
|-----------|-------------------------------------|

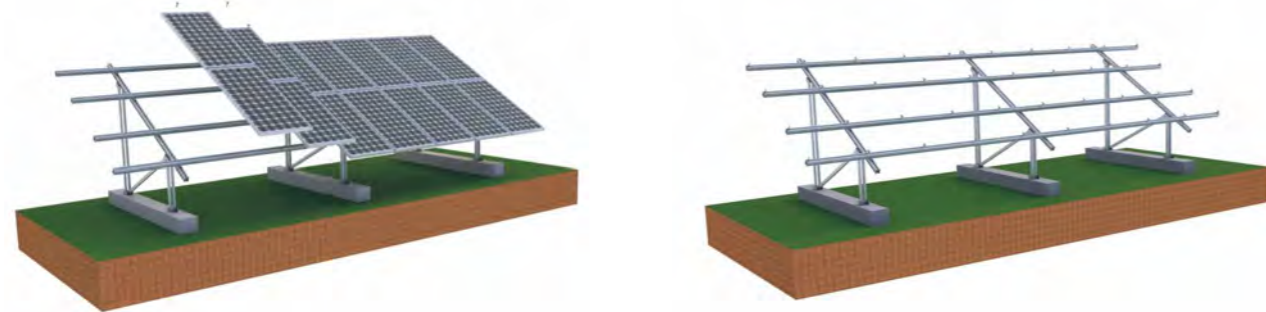
| | |
|-----------|-------------------------------------|
| HOP-TPS-2 | HOP Tripod Support Kit 15~30 Degree |
|-----------|-------------------------------------|

| | |
|-----------|-------------------------------------|
| HOP-TPS-3 | HOP Tripod Support Kit 30~60 Degree |
|-----------|-------------------------------------|



GROUND MOUNTING SOLUTION I

Hopergy Ground Mount Solution I is one of most innovative pre-assembled support system being applicable installation covering residential outdoor field, medium commercial solar farm and utility scale solar project. The solution is flexible and simple to be installed cost-effectively and high efficiently, has being widely installed throughout the world.



Technical Features:

Standard: AS/NZS1170, Euro Code8, DIN1055, IBC2006
Material: High Class Aluminum6005-T5 and Stainless Steel SUS304
Snow Load: 1.4 KN/m²
Max Wind Speed: 55 m/s
Warranty: 15 Years and 25 Years Service Life



GROUND MOUNTING SOLUTION II

Ground Mounting System II is made of high class anodized aluminum 6005-T5 and Q235 hot-dip galvanized steel. It can be installed both on flat roof and ground with flexible application, low cost and compatible for many places with obvious advantage.

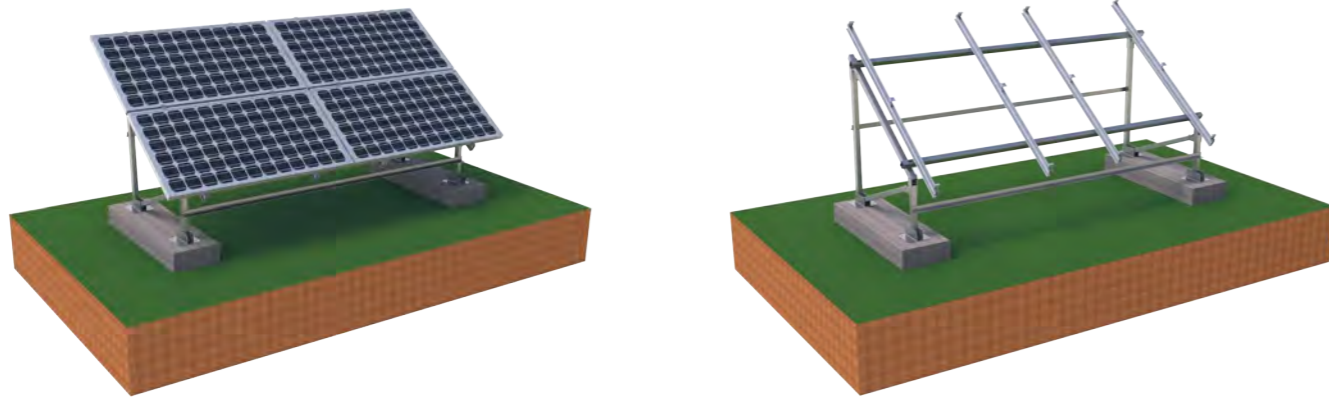


Technical Features:

Standard: AS/NZS1170, Euro Code8, DIN1055, IBC2006
Material: High Class Aluminum6005-T5 and Stainless Steel SUS304
Snow Load: 1.4 KN/m²
Max Wind Speed: 55 m/s
Warranty: 15 Years and 25 Years Service Life

GROUND MOUNTING SOLUTION III

Hopergy Ground Mounting Solution III is applicable to use in solar PV application from residential to commercial open field. The solution is fast and simple to be installed high efficiently and cost-effectively, being installed on the flat roof is also available.



Technical Features:

Standard: AS/NZS1170, Euro Code8, DIN1055, IBC2006
Material: Anodized Aluminum6005-T5 and Hot-dip Galvanized Steel Q235
Snow Load: 1.4 KN/m²
Max Wind Speed: 55 m/s
Warranty: 15 Years and 25 Years Service Life

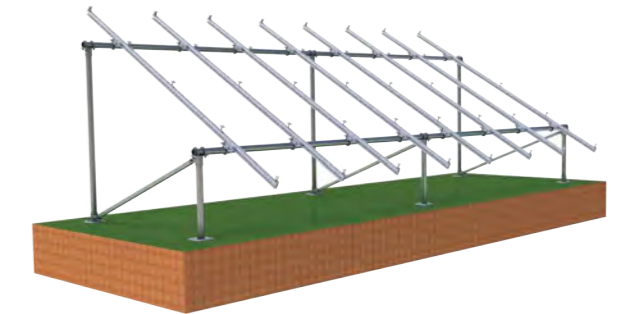


GROUND MOUNTING SOLUTION IV

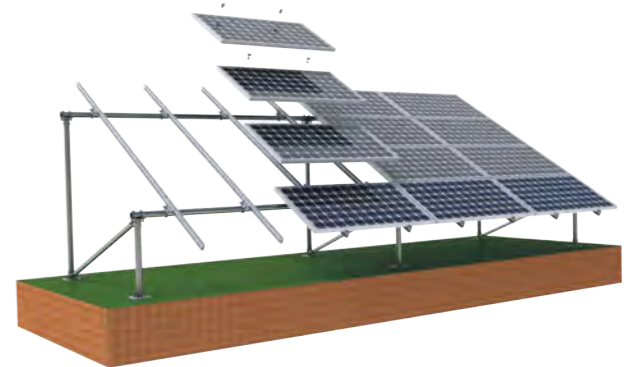
Hopergy Ground Mount Solution IV is the optimized solution applicable for installation in medium commercial and utility scale solar project. The solution is fast and simple to be installed high efficiently and cost-effectively. Using high class galvanized steel pipe with Zinc coating thickness of more than 80um fixed onto the ground ensures high quality material selection. The solution is widely applied with relative engineering certification throughout the world.

Technical Features:

Standard: AS/NZS1170, Euro Code 8, DIN 1055, IBC 2006
Material: Anodized Aluminum 6005-T5 and High Class Thick Hot-dip Galvanized Steel Q235
Snow Load: 1.4 KN/m²
Max Wind Speed: 55 m/s
Warranty: 15 Years and 25 Years Service Life



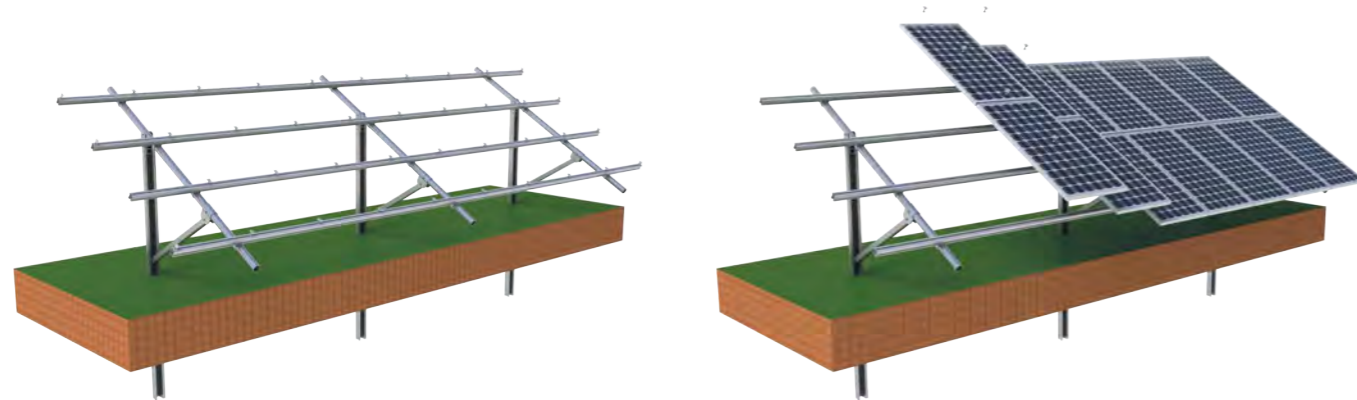
Direct Embedded



Anchor Bolt Fixed

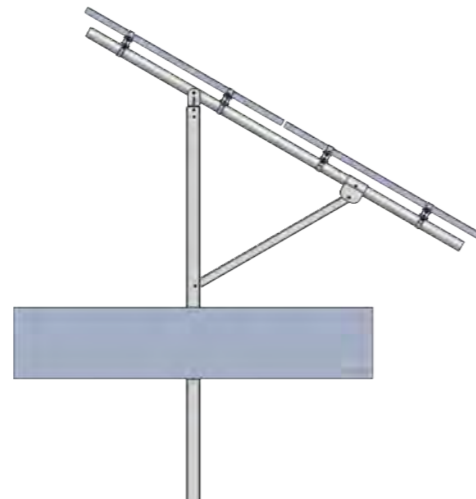
GROUND MOUNTING SOLUTION V

Hopergy Ground Mounting Solution V is one pre-assembled ground mount solution applicable for large commercial and utility scale solar installation. The solution is fast and simple to be installed high efficiently and cost-effectively. Using high class galvanized steel pipe with Zinc coating thickness of more than 80um fixed onto the ground ensures high quality material selection. The solution is widely applied with relative engineering certification throughout the world, being installed on uneven open field is available.



Technical Features:

- Standard:** AS/NZS1170, Euro Code 8, DIN 1055, IBC 2006
- Material:** Anodized Aluminum 6005-T5, SUS304 and Thick Hot-dip Galvanized Steel Q235
- Snow Load:** 1.4 KN/m²
- Max Wind Speed:** 55 m/s
- Pile Driving Depth:** 1500mm-2000mm
- Soil Condition:** Non-sandy
- Warranty:** 15 Years and 25 Years Service Life



GROUND SCREW

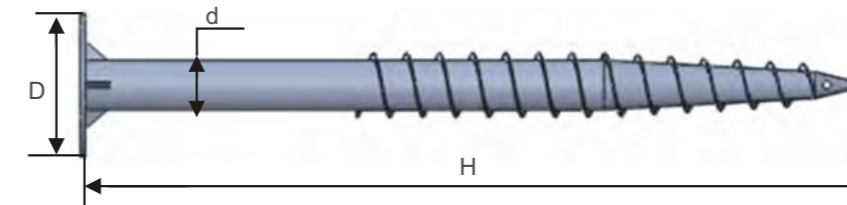
Hopergy provide ground screws with flange plate and ground screws without flange plate being compatible with our ground mount component. Each specific application is determined through detailed static load analysis. Ground screws that are modern foundation system with special-purpose developed installation equipment using drilling machine is now established worldwide as the most efficient and cost-saving footing solution, being widely applied to different soil conditions such as loose soil, bedrock, sandy land and swamp etc.

Technical Features:

- Material:** Hot-dip Galvanized Steel Q235
- Warranty:** 15 Years and 25 Years Service Life

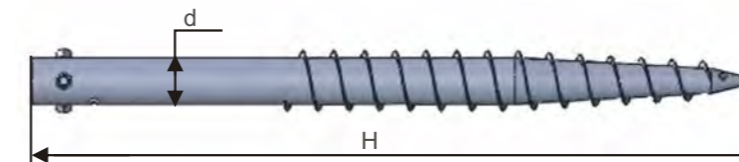
Ground Screw with Flange Plate

| Item No. | D(mm) | d(mm) | H(mm) |
|------------------|-------|-------|-------|
| HOP-GS-F-76×1200 | 220 | 76 | 1200 |
| HOP-GS-F-76×1600 | 220 | 76 | 1600 |



Ground Screw without Flange Plate

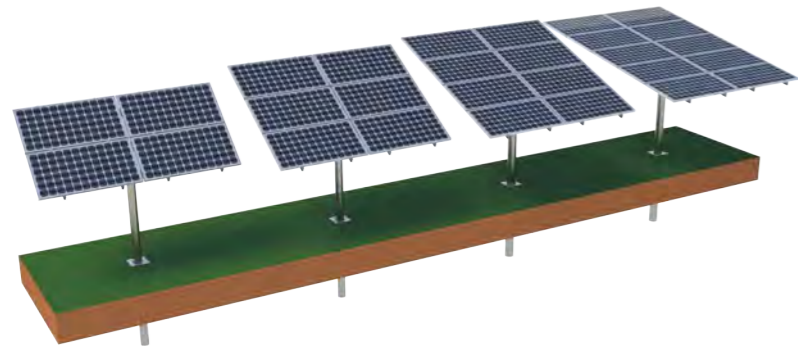
| Item No. | d(mm) | H(mm) |
|----------------|-------|-------|
| HOP-GS-76×1200 | 76 | 1200 |
| HOP-GS-76×1600 | 76 | 1600 |



POLE MOUNTING SOLUTION

Hopergy Pole Mount is one optimized solution to mount 4, 6, 8 or 10 panels each pole with effective, flexible and durable single support post. Each pole system can be adjusted to five angles for being fixed at 10, 20, 30, 40 and 50 degree.

The Pole Mount is just the right application for mounting solar water pumping system in remote areas, as well as an alternative choice for residential open field, medium commercial solar project installation.



Technical Features:

- Standard:** AS/NZS1170, Euro Code 8, DIN 1055, IBC 2006
- Material:** Anodized Aluminum 6005-T5 and SUS304 and Thick Hot-dip Galvanized Steel Q235
- Snow Load:** 1.4 KN/m²
- Max Wind Speed:** 55 m/s
- Foundation Base:** Concrete with Pre-buried Bolt
- Warranty:** 15 Years and 25 Years Service Life



| Item No. | Description |
|-----------|-----------------------------|
| HOP-PM-04 | Pole Mount for 4pcs Panels |
| HOP-PM-06 | Pole Mount for 6pcs Panels |
| HOP-PM-08 | Pole Mount for 8pcs Panels |
| HOP-PM-10 | Pole Mount for 10pcs Panels |

EARTHING SYSTEM

HOP-ELG

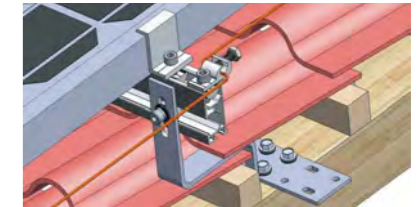
HOP Earthing Lug

Material : Aluminum 6005-T5 and SUS304

Pre-assembled Connect System to Equipment Ground Conductor



HOP-ELG



HOP-EBJ

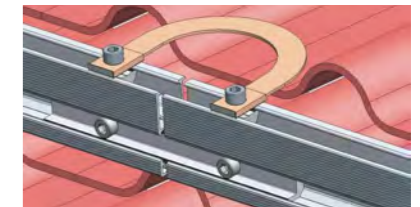
HOP Bonding Jumper

Material : Braided Copper Wire and SUS304

Pre-assembled Connect System to create an electrical path between rails



HOP-EBJ



HOP-EW

HOP Earthing Washer

Material : Stainless Steel SUS304

HOP-EW-A

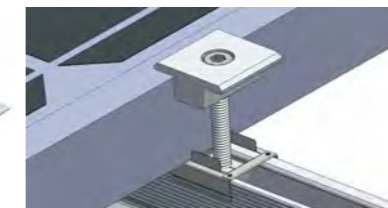
HOP Embedded Earthing Washer

HOP-EW-B

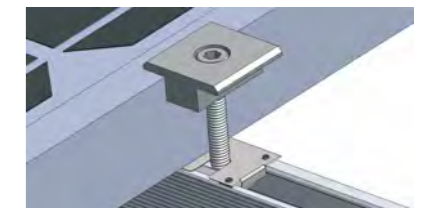
HOP Square Earthing Washer



HOP-EW-A



HOP-EW-B



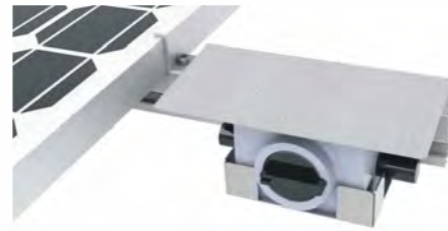
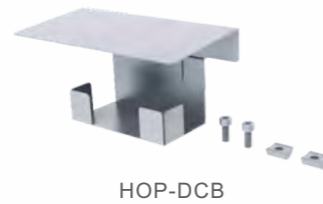
COMPATIBLE ACCESSORIES

HOP-DCB

HOP DC Isolator Box

Material : Stainless Steel SUS 304

Hopergy DC Isolator Box is an outdoor weatherproof enclosure for fixing the DC Isolator onto HOP rail.



HOP-RCC

HOP Cable Clip for PV Rail

Material : Stainless Steel SUS 304

Hopergy Rail Cable Clip is one of cable clips fixed onto PV rail to keep any loose cables tidy and secure.



HOP-PCC

HOP Cable Clip for Solar Panel

Material : Stainless Steel SUS 304

Hopergy Solar Panel Cable Clip is one of cable clips fixed under solar panel to keep any loose cables tidy and secure.

